

SLAM -- Fall 2013 Status Update



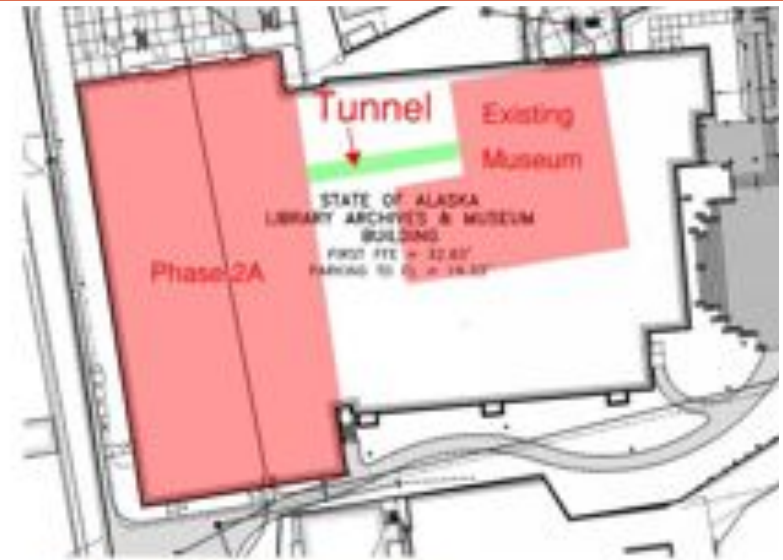
STATE OF ALASKA
LIBRARY ARCHIVES MUSEUM



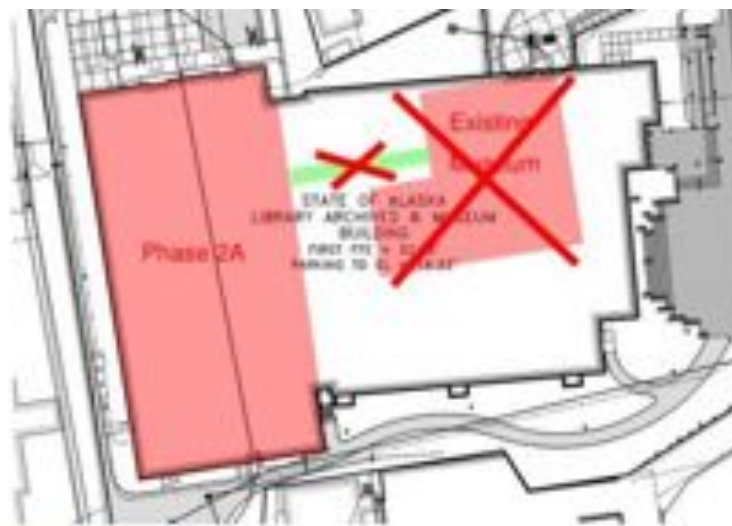
Construction Sequencing



1. Construction of Phase 2a - Secure Vault



2. Safe Transfer of Museum Objects



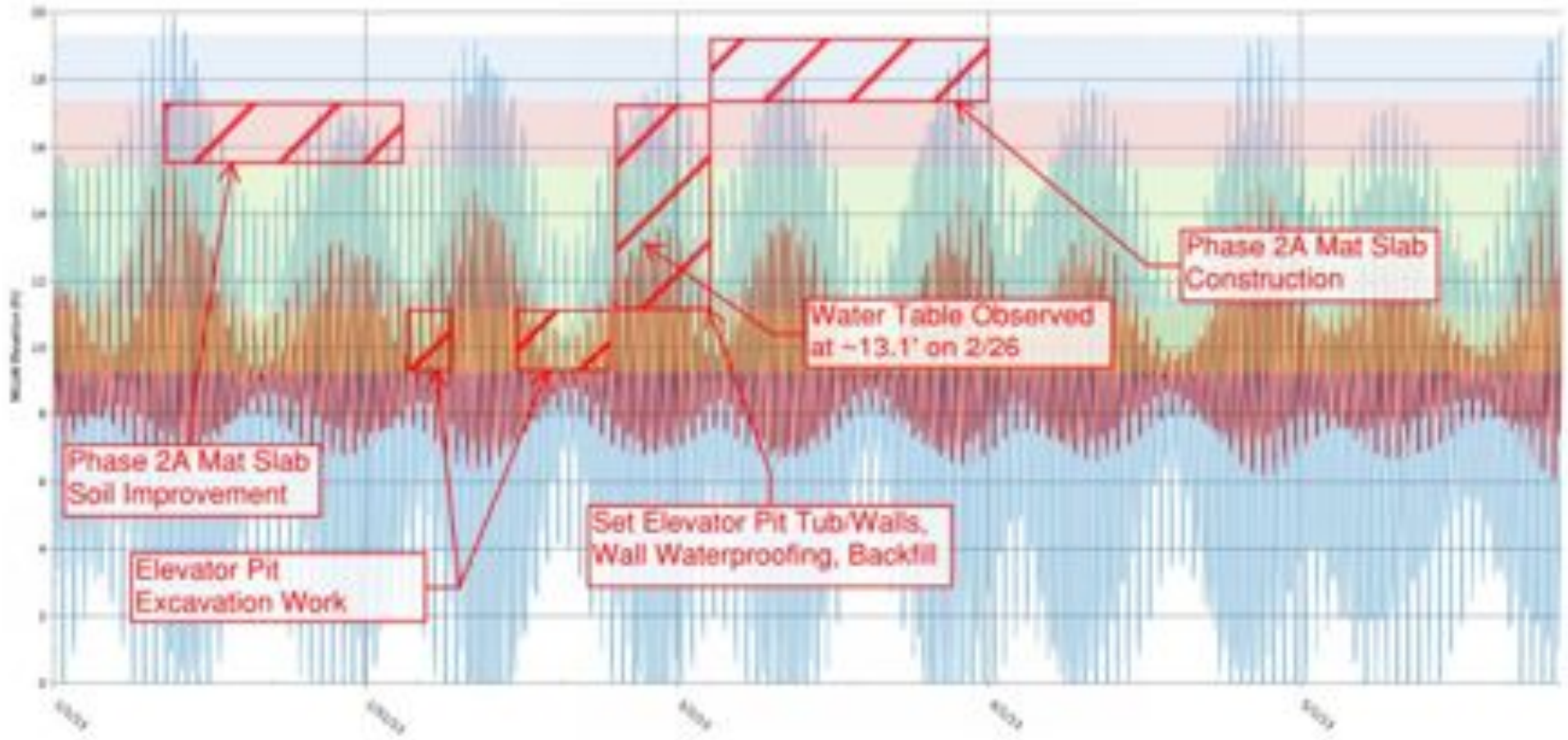
3. Demolition



4. Construction of Phase 2b

Risk Management -- Tidal Influence

Tides & Predicted Water Table for First 6 Months of Construction



Risk Management -- Tidal Influence



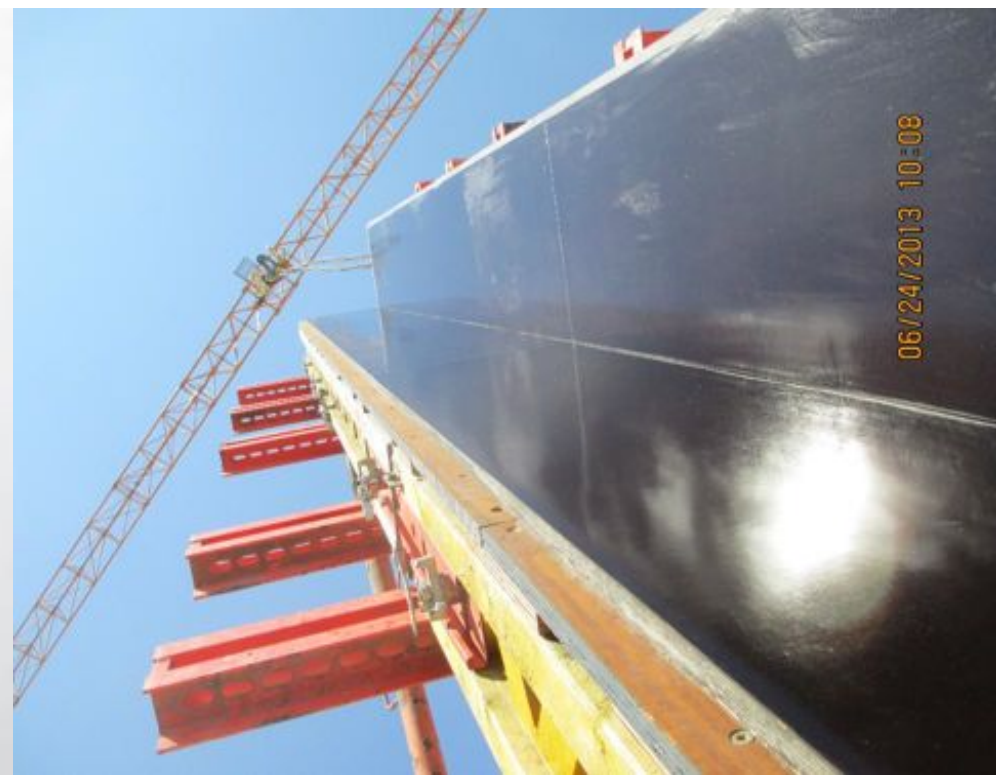
Quality – Waterproofing Mock-up



Quality – Exterior Wall Testing



Quality – Concrete



Safety

Pedestrian Safety – the problem

Roughly 25 reported incidents to date at Egan Drive and Whittier Street

Follow traffic rules – best practices

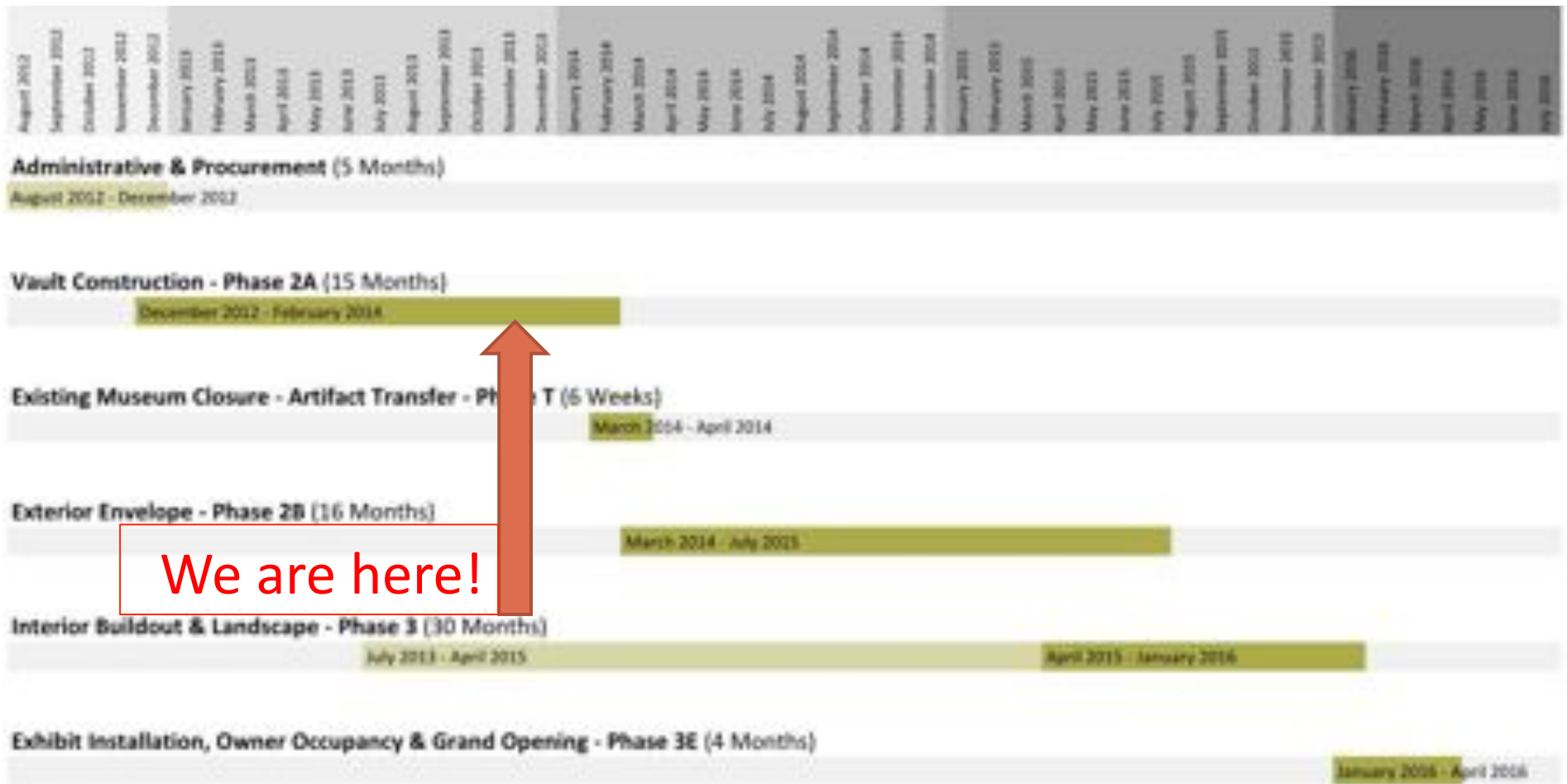
- ✓ Be aware of your own safety in the crosswalks.
- ✓ Make eye contact with vehicle driver
- ✓ Wear reflective coats/jackets
- ✓ Use light baton (see PCL project office)

Other measures underway:

1. Yield to Pedestrians sign – Completion fall 2013
2. Egan Drive (Main street to the Bridge) Pedestrian and Bicycle Safety Project – Completion 2016
3. Evaluation of leading pedestrian interval, new crosswalk at west side of Whittier, flashing yellow turn signal.



Construction Timeline



Questions?

State of Alaska Library Archives Museum